



Skills and Training Directory for Health and Social Care

2024/25

Introducing Caring Plymouth	3
Case studies	5
Funding information	7
Basic skills	8
English	
Maths	
ICT/Digital skills	
English for Speakers of Other Languages (ESOL)	
Entry-level qualifications	10
Level 1 qualifications	12
Level 2 qualifications	13
Level 3 qualifications	17
Level 4 qualifications	20
Level 5 qualifications	21
Level 6/7/8 qualifications	22
Other available training/certification	28

Launch of Caring Plymouth



Making Plymouth a great place to grow up and grow old in is one of the city's key priorities and ensuring that the right care is available for people is critical.

Across the health and social care sector we recognise that there are clear challenges with both recruitment and retention. Whilst this problem is not exclusive to Plymouth, we are determined to address it by taking a collaborative approach through Caring Plymouth, our sector skills partnership for the health and social care sector.

Delivering both city-wide and system-wide, Caring Plymouth helps to champion the sector by coordinating action across skills, training, education, careers and jobs.

Welcome to the first edition of our localised Skills and Training Directory specifically for health and social care.

We recognise that investing in people as the most valuable asset is an important part of retaining the workforce, so I am delighted to share Plymouth's first dedicated skills and training directory specifically focused on health and social care to help you learn about the options available in the city.

Showcasing the wide breadth of health and social care offers from local training and education providers, this directory will be useful for those looking to enter the sector to gain the required skills, knowledge and qualifications, and for the existing workforce to support upskilling, retraining, and career progression.

Good luck with choosing the best route for you!

**Tracey Lee, Chief Executive, Plymouth City Council
and Chair, Plymouth Local Care Partnership**

Our vision

Caring Plymouth, the city's sector skills partnership for health and social care, offers an integrated, flexible approach to deliver a sustainable and skilled workforce, able to provide the highest quality of care and support.

Officially launched in November 2023, Caring Plymouth is working together across the public, private and voluntary sectors to bring together a coordinated place-based approach to tackling workforce challenges, particularly around recruitment and retention in adult social care. Working as part of a wider system to improve overall delivery is already making a positive impact.



Support available from Caring Plymouth

The Caring Plymouth team are here to help connect you with the training, education, career and job opportunities that best fit you, your lifestyle, skills and experience. Offering impartial information, advice and guidance, the team can also support those already working in the health and care sector to ensure they are better connected with the wider support and training available to continue developing in their careers. To find out more and to keep up-to-date with the latest health and social care news and events happening in Plymouth:

Visit: www.skillslaunchpadplym.co.uk/caringplymouth

Email: caringplymouth@plymouth.gov.uk

Follow: X/Facebook @CaringPlymouth



What is Adult Social Care?

Adult Social Care covers the activities delivered to support a wide range of individuals to live independently, safe and well. These activities take place across various settings such as; care homes, day centres, within the local community and in an individual's own home.

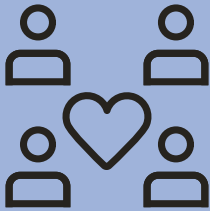


Did you know?

In Plymouth there are 8,000 people working and over 500 vacancies within adult social care, with vacancies increasing by 55% in 2021/22 (Skills for Care, 2022) and direct care role account for over 65% of all jobs within adult social care in the city (NHS, 2022).

Care homes, supported living and domiciliary care (or home care) are on the frontline of social care delivery in England with:

Around
1.5 million
people work in adult social care in England, with around three-quarters in direct care roles
(Kings Fund 2024)



Estimated
360,792
people in England are care home residents
(Census 2022)



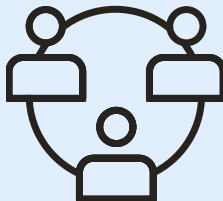
Over
300,000
people in England are receiving care at home
(Census 2022)



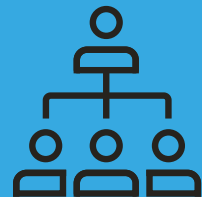
In Plymouth, there are
6,600 filled Adult Social Care posts
(Skills for Care, 2023) and
3,200 individuals are receiving Community Based Care
(Plymouth City Council, 2023)



As of 2023, there are
94 care homes
50 domiciliary care providers and
18 supported living providers in Plymouth
(homecare.co.uk 2023)



Caring Plymouth works closely with the Council's Adult Social Care Commissioning team, prioritised adult social care providers and key partners including University Hospitals NHS Trust and Liewell Southwest



What are care homes?



Care Homes – To access full list of care home providers view the Plymouth Online Directory

Care homes provide a home and personal care for people who need extra support in their daily lives. Care homes can be categorised into 2 main types – Residential, which ensure needs of residents are met and Nursing, which ensures needs are met as well supporting with nursing needs, commonly supported by a qualified Nurse.

What is domiciliary care?

Domiciliary Care - To access full list of domiciliary care providers view the Plymouth Online Directory.

These providers enable people with care needs to remain in their own home rather than moving into a care setting or staying in hospital. It is often provided to the elderly but can also be offered to children, young people or adults with temporary care needs.



What is supported living and extra care?



Supported Living and extra care – To access full list of supported living an extra care providers view the Plymouth Online Directory.

Supported living providers is typically offer support and/or care services to help people to live as independently as possible. Enabling individuals to decide where they want to live and who with, how they want to be supported and what happens in their own home.

Case studies

ALEXANDRA SMITH

Activities Coordinator Furzehatt Care Home

I have been working at Furzehatt Care Home FOR 3 year, soon to be 4. I first started in the health sector in the US and became a health care assistant for an agency. I found I loved helping people but wanted to stay in one place instead of traveling. Once I immigrated to the UK Covid started and I was laid off from my job. I searched for a caring role near me and found Furzehatt Care home. I started in 2020 as a care assistant and enjoyed this role but I started helping with activities and found I had a passion for entertaining the elderly. In August 2023 I was hired as the activities coordinator and found my passion in life. Enriching my resident's life. I have continued my education while working at Furzehatt with my care certificate, medication training, first aid, and mental health first aid. I am always looking to further better myself for the benefit of my residents. I'm lucky to work in an organisation that encourages staff to continue learning and provides a range of training and qualifications to all.



DEBBI BOWLER

Deputy Home Manager Furzehatt Care Home

I started within the care home at 17, just left school and didn't know what I wanted to do. Initially starting as a kitchen assistant thinking it was a stop gap for a short period roll on 19 years, I'm now the deputy manager. I have been lucky enough to work with a company to progress in my career and been given the opportunities to expand my knowledge and skills in various roles. The best thing about my role is the variety of conditions and Individual's I have a privilege to befriend and care for. It is believed care work is an unskilled occupation, but this is far from the truth. To be able to make a difference and provide a quality of life for individuals and to take pride in providing that person centred care takes compassion and a skilled approach.



KIRI KEENER **Support Worker**

I started working for ICL (JAN Ltd) in 2022 as a Housekeeper.

I loved my job but I wanted to have a change and try something new. In 2023 I became a Support Worker for ICL this has been a much more fulfilling role, since June I have completed my Care Certificate and I am now starting my NVQ Level 2 and 3 In Health and Social Care. I enjoy coming to work, it feels like everyone is part of a family.



JESS NORSWORTHY

Support Worker

I have worked at ICL Home's (JAN LTD) for over a year now, after working within Dementia Care for a number of years and I can hand on my heart say that working at ICL I have developed a love for supporting adults with a Learning Disability, ICL is a home from home, and I see everyone here as family.

Every day is full of fun with the service user, with mental health and physical wellbeing is forefront of everything we do to achieve this we go on multiple day trips and have many different activities throughout the week these include pub lunches, aquarium, the zoo, bowling, Pennywell farm and many more we even have the opportunity to take the service users on holiday and we also have multiple party's throughout the year for birthdays and celebrations, which is full of laughter and dancing.

The management team are incredibly supportive and encourage career growth, result I have almost as a NVQ3 which without ICL I wouldn't have had the courage and confidence to complete. Every day is different and everyday full of laughter and love. I Love coming to work and always leave with a smile and job satisfaction.



STEPHANIE CHRISTIE House Manager (ICL – Competence)

I started my care journey in November 2018 with ICL Homes (JAN Ltd). I had no care experience and lacked confidence, However I quickly felt at home and settled into my new role as a support worker I completed the Care Certificate and all mandatory training feeling very proud of myself and thinking this was all I would achieve within ICL. Then in 2020 ICL then approached me with an opportunity that I was excited to take on, Senior manager within one of our homes, but again I doubted myself that I wasn't good enough. With encouragement from ICL I took on this role and started working towards my NVQ Level 3 In Health and Social Care. I achieved this in 2021, within that past year I grew in confidence and started to believe in myself and relaxed into my new role, which was challenging, fulfilling, and rewarding, I now love a challenge!

Then 2022 I was given another opportunity to gain an extremely important qualification. St Luke's Six Step and End of Life Programme to become an End Of life Champion. Whilst working my way through this programme an opportunity arose to trial a 3 month House Managers role. I couldn't believe what I was hearing and with my new found confidence I embraced this new challenge.

March 2023 I succeeded and I am now the House Manager at Inglenook House, October 2023 I also achieved my verification for St Luke Six Step and End of Life for Inglenook House.

I love my job and I love the fact everyday is different, we have great fun and I've now found my calling in life, to support and provide the best care I can to my service users.



Ashley Britz

Care Assistant

I moved to the UK in December 2021 from South Africa and was looking for a change of career from admin. I have always had a passion for helping people and decided to become a care assistant.

I have loved everything I do with Sanctuary and all the amazing people I work with and care for, all with their own stories.

I have achieved so much through sanctuary and learnt so much.

I have completed my NVQ 2 and become a moving and handling instructor, I am always looking for new ways to help those around me.



Achievement training



Jack started at Achievement Training in September 2020.

Jack enrolled on a study programme as a school leaver gaining qualifications in; Technical Award in Child Development and Care L2 and Certificate in Working with Children in Early Years and Primary Settings.

Jack then moved on to a Traineeship in September 2021 studying, Certificate in Introduction to Health, Social Care and Children's and Young People's Settings as well as Certificate in Preparing to Work in Adult Social Care. This course included a section which helps young people with Employability Skills. Jack did a few weeks of work experience placement at Animal Asia which he really enjoyed. This placement gave him experience of what it is like in a real working environment, which is key to learning the soft skills and behaviours needed to be successful in a job.

Jack then applied for a few apprenticeships in the health and social care sector and was pleased that after quite a bit of effort applying and not getting anywhere that he came across an apprenticeship at Colebrook South West. Jack commenced his L2 Diploma in Care which started in December 2022.

Jack has flourished in his role and is keen to make a lifelong career in Care - he works with

adults with learning disabilities and mental health needs - he loves seeing the individuals achieve their goals and enjoys supporting them to have active happy lives. Jack is given lots of support from Colebrook SWW, he has a great team of colleagues who offer advice and give continuous training, Now that he has experience in the role of a care worker , he feels confident and comfortable asking for support. Jack has recently been promoted to support worker plus and has more responsibilities.

Jack is now working towards English and maths Functional Skills L2 (equivalent of GCSE Grade 4) as part of his L2 apprenticeship, which is the equivalent of 5 GCSEs. Jack's ongoing commitment to self-improvement is reflected in his effort to gain these skills which is not only beneficial in his current role but is also creating a strong foundation for his future career. Jack aspires to achieve the Level 3 Lead Adult Care Worker apprenticeship which is the equivalent of 2 A levels.

Jack's determination to overcome challenges and make a difference in the care sector is commendable. His journey serves as an inspiration for others, especially those who may have faced difficulties in their academic paths.

Jack's success story demonstrates that with dedication and a passion for the work, individuals can achieve their career goals and find fulfilment in their chosen profession. His commitment to continuous learning and career advancement is setting a positive example for those around him.

We are all really happy for Jack - he is achieving, earning twice the normal apprenticeship salary and working in a job he truly loves.

Funding information overview

Level 1 and 2 qualifications:

Maths, English and Digital courses are free to those who do not hold a qualification.

Further funding information for each training provider can be found on their websites.

Level 3 qualifications:

Level 3 qualifications are usually free, if you:

- Already have a level 3 qualification or higher but earn below £25,000 or are unemployed.
- already have a level 3 qualification or higher but are unemployed

More information – [HERE](#)

Level 4, 5, 6 qualifications and above:

For funding information please visit the following [LINK](#)

Key to course providers

Acacia	A
Achievement Training	AT
City College Plymouth	CCP
Discovery College	DC
Focus Training Group	FTG
GHQ	GHQ
Marjon University	MU
NHS England	NHS
Odils	O
On Course South West	OCSW
Real Ideas	RI
South Devon College	SDC
University of Plymouth	UoP

Basic skills to underpin your training and career progression. English, maths and digital skills are integrated into many aspects of a career in healthcare. From administering medication, preparing careplans and the use of technology to track symptoms and log treatment these skills are vital to your core roles and responsibilities, ensuring professional standards are met and competency upheld.

English

Course title	Duration	Provider
Functional Skills (Entry level – Level 2)	Up to 18 weeks	OCSW/ CCP/ AT
GCSE English	Up to one year	OCSW/ CCP

Maths

Multiply - If you're aged 19 and over and don't have maths GCSE at grade C (orequivalent), you can access free numeracy courses through Multiply to build your confidence with numbers and gain a qualification.

Course title	Duration	Provider
Functional Skills (Entry level – Level 2)	Up to 18 weeks	OCSW/ CCP/ AT
GCSE Maths	Up to 1 year	OCSW/ CCP
Multiply	Various	OCSW/ CCP/ FTG/ RI

ICT/ Digital Skills

Course title	Duration	Provider
Digital First Steps	5 weeks	OCSW
Digital Beginners	7 weeks	OCSW
Digital Improvers	4 weeks	OCSW
Digital Functional Skills	5 weeks	OCSW

ESOL (English for Speakers of Other Languages)

Course title	Duration	Provider
IELTS Exam Preparation Course	10 weeks	O
Learn English Language (Pre-Entry - Level 2)	1 year	O
Women Only English Language Courses with Crèche Facilities	1 year	O
English for Speakers of other Languages (Full-time, 16-18years)	1 year	CCP
English for Speakers of other Languages (Part-time, 19+ years)	12 weeks	CCP





Entry Level Qualifications

These qualifications are available at three levels, 1, 2 and 3. They provide an introduction to and a base understanding of a given subject area

Care Certificate

Developed jointly by Skills for Care, Health Education England and Skills for Health, the Care Certificate is an agreed set of standards that define the knowledge, skills and behaviours expected of specific job roles in the health and social care sectors. It is made up of the 15 minimum standards that should be covered if you are 'new to care' and should form part of a robust induction programme.

Sector Based Work Academy Programmes - Care (SWAP)

Care SWAPs are delivered by the Department for Work and Pensions (DWP) in collaboration with local training providers and employers for claimants on out of work benefits. They allow claimants to get the skills and knowledge needed to move into work in the healthcare sector. They are usually delivered face to face between 1-6 weeks. They include skills training, work experience, and conclude with a guaranteed interview with a local employer.

Return to Learn City College Plymouth

Preparation for Access to Higher Education courses (Level 3) including GCSEs and Functional Skills.

E-learning

E-learning is learning from a course or part of a course that is delivered electronically. You access this form of digital learning live online or at your own pace via recorded material. E-learning is varied, provided through video, audio, text, or a combination and can be accessed digitally through your phone, tablet, or laptop. More details in **Other available training/certification.**

Course title	Duration	Provider
Investigating Jobs in the Health Care Sector	2.5 hours	<u>OCSW</u>
Working in Adult Health and Social Care	3 weeks	<u>OCSW</u>
Mental Health Awareness	4 weeks	<u>OCSW</u>
Strategies to Improve Mental Health	2.5 hours	<u>OCSW</u>
Manual Handling for Falls	2.5 hours	<u>OCSW</u>
Taster of the Health and Social Care Sector	3 hours	<u>OCSW</u>
Neuro Diversity Awareness	3 hours	<u>OCSW</u>
Health Care Sector Intro	3 hours	<u>OCSW</u>
Introduction to Sensory Loss	3 hours	<u>OCSW</u>
Introduction to Safeguarding	3 hours	<u>OCSW</u>
Dementia Awareness	3 hours	<u>OCSW</u>
Supporting Additional Learning Needs	4 hours	<u>OCSW</u>
Health and Safety Awareness	5 hours	<u>OCSW</u>
Menopause Awareness for Managers	2 hours	<u>OCSW</u>
Infection Prevention and Control	8 hours	<u>OCSW</u>
Employability Health Check	12 hours	<u>OCSW</u>
Introduction to Dementia	18 hours	<u>OCSW</u>
Introduction to Autism	30 hours	<u>OCSW</u>
Introduction to Learning Difficulties	30 hours	<u>OCSW</u>
Introduction to Neurodiversity	2 weeks	<u>OCSW</u>
Introduction to counselling	5 weeks	<u>OCSW</u>
Aspire Diploma	35 weeks	<u>SDC</u>
NHS England E-learning for Healthcare (for those employed within a healthcare role)	N/A	<u>NHS</u>
Working in Health (Plymouth Skills Builder)	20 hours	<u>CCP</u>



Level 1 Qualifications

Course title	Duration	Provider
Level 1 Award Mental Health Awareness	4 weeks	SDC/ CCP/ OCSW
Level 1 Award Safeguarding	20 hours	OCSW
Level 1 Preparing to Work in Adult Social Care	4 weeks	OCSW
Intro to Health and Social Care	3 weeks	OCSW
Level 1 Award in Employability Skills	6-24 weeks	CCP/ OCSW
Level 1 Alcohol Awareness	6 to 12 weeks	CCP/SDC
Level 1 Introduction to Health and Social Care and Children and Young People's Settings	6-12 weeks	SDC/AT
Level 1 Health and Social Care	1 year	SDC
Level 1 Preparing to Work in Schools	12 weeks	SDC
NCFE Certificate in Personal and Social Development	1 year (Full time)	CCP
Deaf Awareness and Communication	3 weeks	CCP



Level 2 Qualifications

Apprenticeships

Apprenticeships offer a unique opportunity for individuals to gain valuable skills and knowledge while earning a wage. There are various apprenticeship levels available to accommodate individuals with varying levels of education, skills, and career aspirations. The range of apprenticeship levels allows you to enter at a suitable stage based on your current qualifications and long-term career goals. More information: [HERE](#)

Course title	Duration	Provider
Level 2 Preparing to Work in Adult Social care	12-20 weeks	OCSW
Level 2 Emergency First Aid at Work	1 day	CCP
Level 2 Pre-Access: Employment, Training and Personal Development	6 weeks	CCP
Level 2 Pre-access (Step-up Programme)	6 weeks	CCP
Level 2 Dementia Awareness	12 weeks	CCP

Level 2 Counselling Skills Certificate	12 weeks	CCP/ SDC
Level 2 Equality and Diversity	12 weeks	SDC
Level 2 Understanding Specific Learning Difficulties	12-20 weeks	OCSW/ SDC
Level 2 Working with Learning Disabilities	Up to 20 weeks	OCSW
Level 2 Understanding Nutrition and Health	12-20 weeks	OCSW/ CCP
Level 2 Understanding Children and Young People's Mental Health Certificate	Online	SDC
Level 2 Understanding Mental Health First Aid and Advocacy in the Workplace	Up to 20 weeks	OCSW
Level 2 Understanding Mental Health First Aid	12 weeks	SDC
Level 2 Understanding Autism	12-20 weeks	OCSW/ CCP/AT
Level 2 Understanding Behaviour that Challenges	12-20 weeks	GHQ/ AT/ OCSW/ SDC
Level 2 Information, Advice and Guidance (IAG)	12-20 weeks	OCSW/ CCP/ SDC
Level 2 Mental Health Awareness	12-20 weeks	OCSW/ SDC
Level 2 Introduction to Psychology, Criminology and Counselling	12 weeks	SDC
Level 2 Falls Prevention Awareness	Up to 20 weeks	OCSW
Level 2 Safe Handling of Medication	Up to 20 weeks	OCSW
Level 2 Principles of Care Planning	Up to 20 weeks	OCSW
Level 2 Suicide Awareness	Up to 20 weeks	SDC
Level 2 Certificate in the Principles of End-of-Life Care	Up to 20 weeks	OCSW AT
Level 2 Certificate in Customer Service for Health and Social Care	Up to 20 weeks	OCSW/
Level 2 Understanding Dignity and Safeguarding in Adult Social Care	11 weeks	AT

Level 2 Certificate in the Principles of Dementia Care	Up to 20 weeks	OCSW
Level 2 Certificate in the Principles of Dementia Care	Up to 20 weeks	OCSW/ CCP
Level 2 Understanding Working with Mental Health Needs	Up to 20 weeks	OCSW
Level 2 Understanding Cancer Support	Up to 20 weeks	OCSW
Level 2 Common Health Conditions	Up to 20 weeks	OCSW AT
Level 2 Care and Management of Diabetes	Up to 20 weeks	OCSW/ SDC
Level 2 Dignity and Safeguarding Adult Social Care	Up to 20 weeks	OCSW/ AT
Level 2 Understanding Personal Care Needs	Up to 20 weeks	OCSW
Level 2 Prevention and Control of Infection	Up to 20 weeks	OCSW
Level 2 Safe Handling of Medication	Up to 20 weeks	OCSW
Level 2 Understanding Technology Enabled Care	Up to 20 weeks	OCSW/
Level 2 Caring for Children and Young People	Up to 20 weeks	OCSW
Level 2 Understanding Domestic Abuse	Up to 20 weeks	OCSW
Level 2 Youth Work Practice	6 months	CCP
Level 2 Certificate in Understanding Children and Young People's Mental Health	6 months	GHQ
GCSE Combined Science	28 weeks	OCSW
GCSE Biology	27 weeks	OCSW/ CCP
Level 2 Health and Science (T-Prep Transition Programme)	1 year	SDC/ CCP
Level 1/2 First Diploma in Health and Social Care (BTEC)	1 year	DC
Level 2 Adult Care Diploma		SDC
Level 2 (Intermediate) Apprenticeships - Adult Care Worker Apprenticeship	12 months + 3 month EPA (end point assessment)	FTG/ SDC/ CCP/ AT

Level 2 EarlyYears Practitioner Apprenticeship	12 months + 3 month EPA (end point assessment)	CCP
Level 2 Return to Learn	1 year	CCP
Level 2 Award in Support Work in Schools and Colleges	6 weeks	AT
Level 2 Certificate in Supporting Teaching and Learning	1 year	AT/ SDC
Level 2 Care and Management of Diabetes	12 weeks	SDC
Level 2 Understanding Mental Health in the Workplace	12 weeks	CCP
Level 2 Understanding Autism	12 weeks	CCP
Counselling Skills	12-20 weeks	OCSW
Level 2 Certificate and Extended Diploma in Health and Social Care	7 months	AT
Certificate in Health Care Level 2 for all	6 months	AT
Level 2 Awareness of Mental Health Problems	11 weeks	AT



“My name is Alex, and I am currently a 3rd year mental health nursing student.

I had started my journey 9 years ago as a healthcare assistant. But in recent years, I decided to further my training. After contacting the University of Plymouth. I realised that I was nowhere near qualified to start yet. So, I decided to take part of an Access to Higher Education course at City College Plymouth. As well as doing my GCSE's in Maths and English. The help and support I received from the teachers there has been unforgettable. Despite having three children and at the time, a full-time job. I struggled with timekeeping at times. However, I was always inspired and motivated by the teachers and gained a passion for Sociology! The Access to HE course set me up for university so well that it made my first year as a nursing student a breeze! I am forever grateful for the opportunities I have been given!”



Level 3 Qualifications

Access to Higher Education

Equivalent to three A-Levels the various Access to HE pathways enable you to develop the skills and knowledge you need to succeed at University. Minimum entry requirements include a Level 2 English and maths. This pathway can be funded using an Advanced Learner Loan which, if you successfully complete your degree programme, will be waived.

T-Levels

T-Levels are aimed at school leavers and are designed to give you a head start towards a career in your chosen field. They follow GCSEs and are equivalent to three A Levels. Designed with employers, including the NHS, on this two year course you will spend 80% of your time in the classroom and 20% on a 45-day work placement which will give you the skills and knowledge that employers are looking for. Undertaking a T-Level will help you to step straight into your chosen career, an apprenticeship, or a degree programme.

Course title	Duration	Provider
Access to Higher Education Diploma – Health, Social Care, Nursing and Midwifery (Face to face and online)	1 year	CCP
Access to Higher Education Diploma - Health, Social Care and Social Work (Face to face and online)	1 year	CCP
Access to Higher Education Diploma - Science and Nursing (Face to face, Full-time and Part-time and online)	1 year	CCP
Access to Higher Education Diploma - Science (Face to face, Full-time and Part time and online)	1 year	CCP/SDC
Access to Higher Education Diploma - Social Science (Counselling) (Face to face and online)	1 year	CCP
Access to Higher Education Diploma - Education (Teaching) (Face to face and online)	1 year	CCP
Access to Higher Education - Nursing	1 year (online)	OCSW
Access to Higher Education - Health and Social Care	1 year (online)	OCSW
Access to Higher Education - Midwifery	1 year (online)	OCSW
Access to Higher Education - Health Professionals	1 year (online)	OCSW/SDC
Access to Higher Education - Psychology	1 year (online)	OCSW
Access to Higher Education - Social Science and Health	1 year (online)	OCSW
Access to Higher Education - Social Science and Humanities	1 year (online)	OCSW
Access to Higher Education - Social Work	1 year (online)	OCSW
Access to Higher Education - Social Science	1 Year	SDC
Level 3 Diploma in Adult Care	1 year	AT/SDC
T-Level Health: Supporting Health care - Support in the Adult Nursing Team	2 years	CCP/SDC
T-Level Health care Science: Assisting with Healthcare Science; Pharmacy Services	2 years	CCP

T-Level Childhood Education (Early Years Education; Assisting Teaching)	2 years	CCP
T-Level Education and EarlyYears: Assisting Teaching	2 years	SDC
Level 3 Understanding Autism	Up to 20 weeks	OCSW
Level 3 Understanding Mental Health	Up to 20 weeks	OCSW/ SDC
Level 3 Understanding the Care and Management of Diabetes	Up to 20 weeks	OCSW
Level 3 Understanding the Principles of Dementia Care	Up to 20 weeks	OCSW
Level 3 Understanding Autism	Up to 20 weeks	OCSW
Level 3 Understanding Mental Health	Up to 20 weeks	OCSW
Level 3 Understanding the care and mangement of Diabetes	Up to 20 weeks	OCSW
Level 3 Understanding the principles of Dementia Care	Up to 20 weeks	OCSW
Level 3 Award in Supporting Children and Young People’s Speech, Language and Communication	6 months	GHQ
Level 3 (Advanced) Apprenticeship - Senior Healthcare Support Worker	18-24 months	SDC/AT/ CCP
Level 3 (Advanced) Apprenticeship - Lead Adult Care Worker	18-24months	SDC/FTG
Level 3 National Extended Diploma in Health and Social care (BTEC)	2 years	DC
Level 3 Counselling		OCSW
Level 3 Health care Support Diploma	1 year	SDC
Level 3 Higher Development Award		SDC
Teaching Assistant Apprenticeship	18-24 months	SDC
Level 3 Award in Education and Training (AET)	Up to 12 weeks	CCP/ GHQ/ SDC
Level 3 Diploma in Supporting Teaching and Learning	10 months	AT
Level 3 First Aid at Work Requalification	2 days	CCP



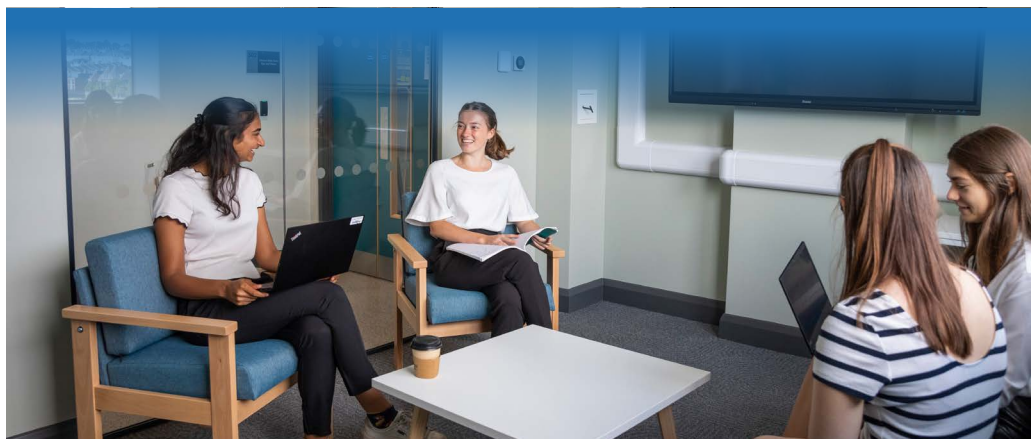
Level 4 Qualifications

Course title	Duration	Provider
Level 4 Diploma in Adult Care	12-18 months	AT
Level 4 (Higher) Apprenticeship - Lead Practitioner in Adult Care	18 months + 3months EPA (end point assesment)	AT/FTG
Level 4 Certificate in Education and Training (CET)	1 year	GHQ/ CCP/SDC



Level 5 Qualifications

Course title	Duration	Provider
Level 5 Apprenticeship - Leader in Adult Care Work	18 months + 3months EPA (end point assesment)	FTG/AT
Level 5 Diploma for Leadership and Management for Adult Care		AT
FdSc Assistant Practitioner	2 years	MU
Higher Level Apprenticeship Assistant Practitioner (Health)	2 Years (Full-time)	MU
(FdSc) Nursing Associate	2 years (Full-time) 4 years (Part-time)	MU/SDC
FdSc Psychology and Counselling Skills		SDC
Higher Level Apprenticeship Nursing Associate	2 Years (Full-time)	MU/UoP
AptitudeTest in Hearing Aid Dispensing	6 weeks	SDC
FdA Teaching and Learning	2 years (Full-time) 4 years (Part-time)	MU
Level 5 Diploma in Education and Training	2 years	CCP



Level 6/7/8 Qualifications

Course title	Duration	Provider
BSc(Hons) Enhanced Integrated Care (Top up)	1 year	SDC
BSc(Hons) Nursing (Adult)	3 years (Full-time)	MU
BSc(Hons) Counselling for the Helping Professions	3 years (Full-time) 6 years (Part-time)	MU
BSc(Hons) Psychology	3 years (Full-time) 6 years (Part-time)	MU
M.Ost. Master of Osteopathic Medicine (Undergraduate Pre-registration Masters)	4 years (Full-time) 6 years (Part-time) NB all Part-time students must go Full-time in years 5 and 6	MU
Physiotherapy - M Physio	4 Years (Full-time)	MU
BSc(Hons) Speech and Language Therapy	3 Years (Full-time) 6 Years (Part-time)	MU
MA Arts, Health and Wellbeing	1 year (Full-time) 2 years (Part-time)	MU
Master of Public Health (MPH)	Up to 3 years (Part-time)	MU
MRes (Research Masters)	1 year (Full-time) 2 years (Part-time)	MU
MSc Advanced Psychotherapy and Counselling Studies	1 year (Full-time) 2 years (Part time)	MU
MSc Psychology	1 year (Full-time) 2 years (Part-time)	MU

MSc Psychology for Leadership	2 years (Part-time)	MU
PGCE Secondary Education with Psychology	1 year (Full-time)	MU
BA(Hons) Community, Youth and Families	3 years (Full-time)	MU
BA(Hons) Special Educational Needs and Disability Studies	3 years (Full-time)	MU
BA(Hons) Youth and Community Work	3 years (Full time)	MU
BSc(Hons) Psychology	3 years (Full time) 6 years (Part-time)	MU
BA Youth Work Integrated Degree Apprenticeship	3 years (Full-time)	MU
MPsy Master of Psychotherapy and Counselling	4 years (Full-time) 8 years (Part-time)	MU
MA Education - Coaching, Mentoring and Leadership	2 years (Full-time) 3 years (Part-time) to include the PG Certificate in Coaching and Mentoring	MU
MA Education - Disability	1 year (Full-time) 2 years (Part-time)	MU
MA Education - Educational Leadership	1 year (Full-time) 2 years (Part-time)	MU
MA Social Policy	1 year (Full-time) 2 years (Part-time)	MU
MA Youth and Community Practice - Research and Leadership	1 year (Full-time) 2 years (Part-time)	MU
MA Youth and Community Work	1 year (Full-time) 2 years (Part-time)	MU
Registered Nurse Degree Apprenticeship	3 years	UoP
BSc(Hons) Nursing (Adult Health)	3 years (Full-time)	UoP
BSc(Hons) Nursing (Adult Health)	4 years (Part-time)	UoP
BSc(Hons) Nursing (Child Health)	3 years (Full-time with placements)	UoP
BSc(Hons) Nursing (Child Health)	4 years (Part-time)	UoP

BSc(Hons) Nursing (MentalHealth)	3 years (Full-time with placements)	UoP
BSc(Hons) Midwifery	3 years (Full-time) Blended learning.	UoP
BSc(Hons) Dietetics	3 years (Full-time)	UoP
BSc(Hons) Occupational Therapy	3 years (Full-time with placements)	UoP
BSc(Hons) Paramedic Science	3 years (Full-time with placements)	UoP
BSc(Hons) Physiotherapy	3 years (Full-time with placements)	UoP
BSc(Hons) Podiatry	3 years (Full-time with placement)	UoP
BA(Hons) Social Work	3 years (Full-time)	UoP
BSc(Hons) Critical care	5 years (Part-time)	UoP
BSc (Hons) Professional Development in Advancing Practice	Up to 5 years (Part-time)	UoP
BSc(Hons) Professional Development in Critical Care	5 years (Part-time)	UoP
BSc (Hons) Professional Development in End-of-Life Care	5 years (Part-time)	UoP
BSc(Hons) Professional Development in Health and Social Care	5 years (Part-time)	UoP
BSc(Hons) Professional Development in Long Term Conditions	5 years (Part-time)	UoP
BSc(Hons) Professional Development in Mental Health	5 years (Part-time)	UoP
BSc(Hons) Professional Development in Neonatal Care	5 years (Part-time)	UoP
BSc (Hons) Professional Development in Nursing	5 years (Part-time)	UoP
BSc(Hons) Urgent and Emergency Care	5 years (Part-time)	UoP
BSc(Hons) Diagnostic Radiography	3 years (Full-time with placements)	UoP

BSc (Hons) Dietetics with Integrated Foundation Year	4 years (Full-time with placement)	UoP
BSc (Hons) Occupational Therapy with Integrated Foundation Year	4 years (Full-time with placement)	UoP
MOptom (Hons) Optometry with Integrated Foundation Year	4 years (Full-time with placement)	UoP
BSc (Hons) Paramedic Science with Integrated Foundation Year	4 years (Full-time with placement)	UoP
BSc (Hons) Physiotherapy with Integrated Foundation Year	4 years (Full-time with placement)	UoP
BSc (Hons) Podiatry with Integrated Foundation Year	4 years (Full-time with placement)	UoP
BSc (Hons) Social Work with Integrated Foundation Year (in development/subject to approval)	4 years (Full-time with placement)	UoP
BSc(Hons) Dental Therapy and Hygiene	3 years (Full-time with placement)	UoP
BSc(Hons) Podiatry Degree Apprenticeship	3-4 years Online	UoP
MDiet (Hons) Dietetics	4 years (Full-time with placement)	UoP
MOccTh (Hons) Occupational Therapy	4 years (Full-time with placement)	UoP
MOptom(Hons) Optometry	4 years (Full-time with placement)	UoP
MNurs(Hons) Nursing (Adult Health and Child Health)	4 years (Full-time with placement)	UoP
MNurs(Hons) Nursing (Adult Health and Mental Health)	4 years (Full-time with placement)	UoP
MNurs(Hons) Nursing (Child Health and Mental Health)	4 years (Full-time with placement)	UoP
MSc Pre-registration Nursing (Adult Health)	2 years (Full-time with placement)	UoP
MSc Pre-registration Nursing (Child Health)	2 years (Full-time with placement)	UoP

MSc Pre-registration Nursing (Mental Health)	2 years (Full-time with placement)	UoP
MSc Midwifery (Pre-Registration)	3 years (Full-time with placement)	UoP
MSc Midwifery (Shortened)	2 years (Full-time with placements)	UoP
Level 7 Advanced Clinical Practitioner Degree Apprenticeship	3 years	UoP
Level 7 MSc Podiatry Degree Apprenticeship (Pre-registration)	2 years	UoP
Level 7 MSc Clinical Associate in Psychology	18 months	UoP
Level 7 MSc Advanced Clinical Practice in Ophthalmology	3 years (Part-time)	UoP
Level 7 MSc Advanced Clinical Practitioner in Mental Health	3 years (Part-time)	UoP
Level 7 MSc Advanced Critical Care Practitioner	1 year (Part-time)	UoP
Level 7 MSc Advanced Neonatal Nurse Practitioner	3 years (Part-time)	UoP
Level 7 MSc Advanced Professional Practice (Clinical Practitioner)	3 years (Part-time)	UoP
Level 7 MSc Advanced Professional Practice in Dietetics	1 year (Full-time) (Part-time route available)	UoP
Level 7 MSc Advanced Professional Practice in Paediatric Dietetics	1 year (Full-time) (Part-time route available)	UoP
Level 7 MSc Advanced Professional Practice in Physiotherapy	1 year (Full-time) (Part-time route available)	UoP
Level 7 MSc Advanced Professional Practice in Occupational Therapy	1 year (Full-time) (Part-time route available)	UoP
Level 7 MSc Advanced Professional Practice in Neurological Rehabilitation	1 year (Full-time) (Part-time route available)	UoP
Level 7 MSc Advanced Professional Practice (Nursing and Midwifery Professions)	3 Years (Part-time)	UoP

Level 7 MSc Advanced Professional Practice (Health and Social Care Professions)	1 year (Full-time) (Part-time)	UoP
Level 7 MSc Surgical Care Practitioner (Abdominal, pelvic and general surgery)	1 year (Part-time)	UoP
Level 7 MSc Surgical Care Practitioner (Cardio thoracic Surgery)	1 year (Part-time)	UoP
Level 7 MSc Surgical Care Practitioner (Trauma and Orthopaedic Surgery)	1 year (Part-time)	UoP
Level 7 MSc Human Nutrition	1 year (Full-time) 2 years (Part-time)	UoP
Level 7 MSc Occupational Therapy (Pre-registration)	2 year (Full-time)	UoP
Level 7 MSc Physiotherapy (Pre-registration)	2 years (Full-time)	UoP
Level 7 MSc Medicine in Hazardous Area Response	1 year (Full-time)	UoP
PgDip Advanced Critical Care Practitioner	2 years (Full-time)	UoP
PgDip District Nursing	2 years (Full-time)	UoP
MA Social Work (in development/ subject to approval)	2 years (Full-time with placements)	UoP
PhD Social Work	3-4years (Full-time)	UoP
Advanced Clinical Practice in Neonatal Care Degree Apprenticeship (masters)	3 years	UoP
BSc(Hons) Occupational Therapy Degree Apprenticeship	4 years	UoP
ResM Applied Health Studies University of Plymouth	3-4 years (Full-time) 4-6years (Part-time)	UoP
ResM Applied Health Studies	2-3years (Part-time)	UoP

Other Available Training/Certification

Provider	Overview	Offer	Example content
E-Learning for Healthcare (elfh)	<p>Providing e-learning to educate and train the health and care workforce.</p> <p>These e-learning programmes are developed in partnership with the NHS, 3rd sector and professional bodies and can be accessed for free, 24/7 by health and care professionals.</p>	<p>Full catalogue of online training available once registered.</p> <p>Online training sessions designed to enhance traditional learning, support existing teaching methods, and provide a valuable reference point.</p>	<p>Courses include:</p> <ul style="list-style-type: none"> • Anaemia in Primary Care <p>All Our Health:</p> <ul style="list-style-type: none"> • Interactive Townscapes • Breast Cancer Primary Prevention Education
Livewell South West	<p>Livewell Southwest is a recognised provider of integrated health and social care services operating across South Hams, West Devon and Plymouth,</p>	<ul style="list-style-type: none"> • LEP • Trainee Nurse Associate • Nursing Assistant/ Healthcare Assistant Development Roles • Apprenticeships 	<ul style="list-style-type: none"> • Livewell Employment Programme • Apprenticeships (graphic)
Skills for Care	<p>Established in 2001, Skills for Care is the strategic workforce development and planning body for adult social care in England. Working with employers, Government and partners to ensure social care has the right people, skills and support required to deliver the highest quality care and support now and in the future.</p>		<ul style="list-style-type: none"> • Blogs • Articles • News/Events • Signposting to training and career pathway information

Other Available Training/Certification

Provider	Overview	Offer	Example content
<p>Devon Training Hub (DTH)</p>	<p>DTH's vision is to be recognised as the go-to training, education and development hub for the Devon Primary Care Workforce and aims to develop and empower the Devon Primary Care Workforce through education and training programmes, so they can meet the evolving health and wellbeing needs of the population of Devon.</p>	<p><u>Devon Training Hub</u> has programmes and training opportunities to support you whether you are new to primary care or are looking to develop your career.</p>	<p>Apprenticeships with local training providers Information and useful; resources surrounding career options and progression.</p>
<p>Skills Bootcamps</p>	<p>Skills Bootcamps are developed in partnership with local employers, providers and authorities to help fill skills gaps and vacancies in local areas. A Skills Bootcamp could be for you if you are:</p> <ul style="list-style-type: none"> • looking to progress in your current sector • looking to change jobs or explore a new industry currently employed or self-employed unemployed 	<p>Generic webpage: Available to: Adults aged over 19 looking to update or build their skills Duration: Up to 16 weeks Age restriction: Over 19 Coursetype: Classroom-based, On-the-job, Online, Short courses Cost: Free - funded by the government if you are taking the course yourself and not through your employer</p>	<p>Current offer: LevelThreeCareSkillsBootcamp</p> <ul style="list-style-type: none"> • Online • Approx. 12weeks

Other Available Training/Certification

Provider	Overview	Offer	Example content
DWP – Care Sector Based Work Academy Programme (SWAP)	<p>Care SWAPs are delivered by the Department for Work and Pensions (DWP) in collaboration with local training providers and employers for claimants on out of work benefits. They allow claimants to get the skills and knowledge needed to move into work in the healthcare sector. They are usually delivered face to face between 1-6 weeks. They include skills training, work experience, and conclude with a guaranteed interview with a local employer.</p>	<p>Jobcentre Plus coordinate the running of the SWAP. The training is delivery by a local training provider in Plymouth and runs over the course of one week, concluding with a guaranteed interview with an appropriate employer.</p>	<p>SWAP -</p> <ul style="list-style-type: none"> • One week • Level 1 introductory course • Realities of working in health and social care • Care values • Employability: CV writing, interview skills.
<u>Curve Learning and Development</u>	<p>Curve Learning and Development provide health and social care training across the UK. With a combined total of 50 years of experience across all our staff, we can provide a high level of training. Curve deliver training nationwide and also offer an online eLearning portal that allows trainees to train wherever and whenever.</p>	<ul style="list-style-type: none"> • Face to face (including video options) • Train the trainer • <u>eLearning</u> such as; Autism Awareness, Safeguarding and GDPR 	
<u>St Luke's Hospice Plymouth</u>	<p>The courses offered support and develop all those who care for terminally ill patients and their families, both clinically and non-clinically.</p>	<ul style="list-style-type: none"> • Face to face • Online training • Courses include; advanced care planning, enhancing end of life and T Syringe training 	

Other Available Training/Certification

Provider	Overview	Offer	Example content
<u>T2 Group</u>	T2 provides a range of industry leading Apprenticeships in Health and Social Care and Apprenticeships in Management throughout the UK.	<ul style="list-style-type: none"> • Apprenticeships in Health and Social Care • Apprenticeships in Management 	
<u>Florence Academy</u>	Florence Academy offer an online platform for learning for nurses, carers and support workers. Where CPD and certified qualifications can be gained.	<ul style="list-style-type: none"> • <u>Online platform</u> for courses such as; first aid, working in a person centred way, peg feeding and oral health 	
<u>Your Hippo</u>	Your Hippo offer an online learning platform. Courses are organised into lessons and topics with a training matrix which displays a record of training.	<ul style="list-style-type: none"> • <u>Online platform</u> for courses such as; adults with incapacity, autism awareness and epilepsy awareness. 	
<u>On Course South West</u>	An adult education provider that can provide funded and full cost courses designed to meet your business need.	<ul style="list-style-type: none"> • A brochure of Health and Care related courses that can be tailored for your team including; <ul style="list-style-type: none"> • Face to Face • E-Learning • Blended learning • Workshops • Qualifications • Digital Badges • Regular professional development 	Courses include: <ul style="list-style-type: none"> • health and safety • manual handling • apprenticeships • ESOL plus for second language speakers • Full range of online CPD courses that can be blended.
<u>Livewell SW Training Network</u>	The Livewell SW Training Network is a social enterprise, committed to developing Health and Social Care Professionals for the future, as well as reinvesting its revenue into local	<ul style="list-style-type: none"> • Livewell SW Training Network have a fully equipped, dedicated training facility in Plymouth. Whether you are starting your career or want to develop your knowledge and skills, their knowledgeable trainers bring years of both academic and practical clinical experience to the training sessions. 	Livewell SW Training Network offer a wide variety of accredited courses, specialist training, professional development, mandatory training and refresher updates; venepuncture, child protection, ear care, physical intervention, leadership and management and many more, all in line with current best practice and national guidelines.

The content of the Skills Directory was correct at the time of publication (Autumn 2024)



**Find a job that suits your lifestyle,
skills and experience.**

Work in care.

We can help you to find the perfect job or training opportunity in Plymouth.

Learn more at plymouth.gov.uk/workincare

One  **Devon**

